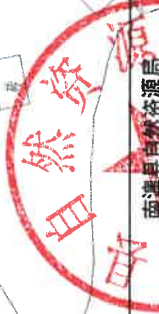
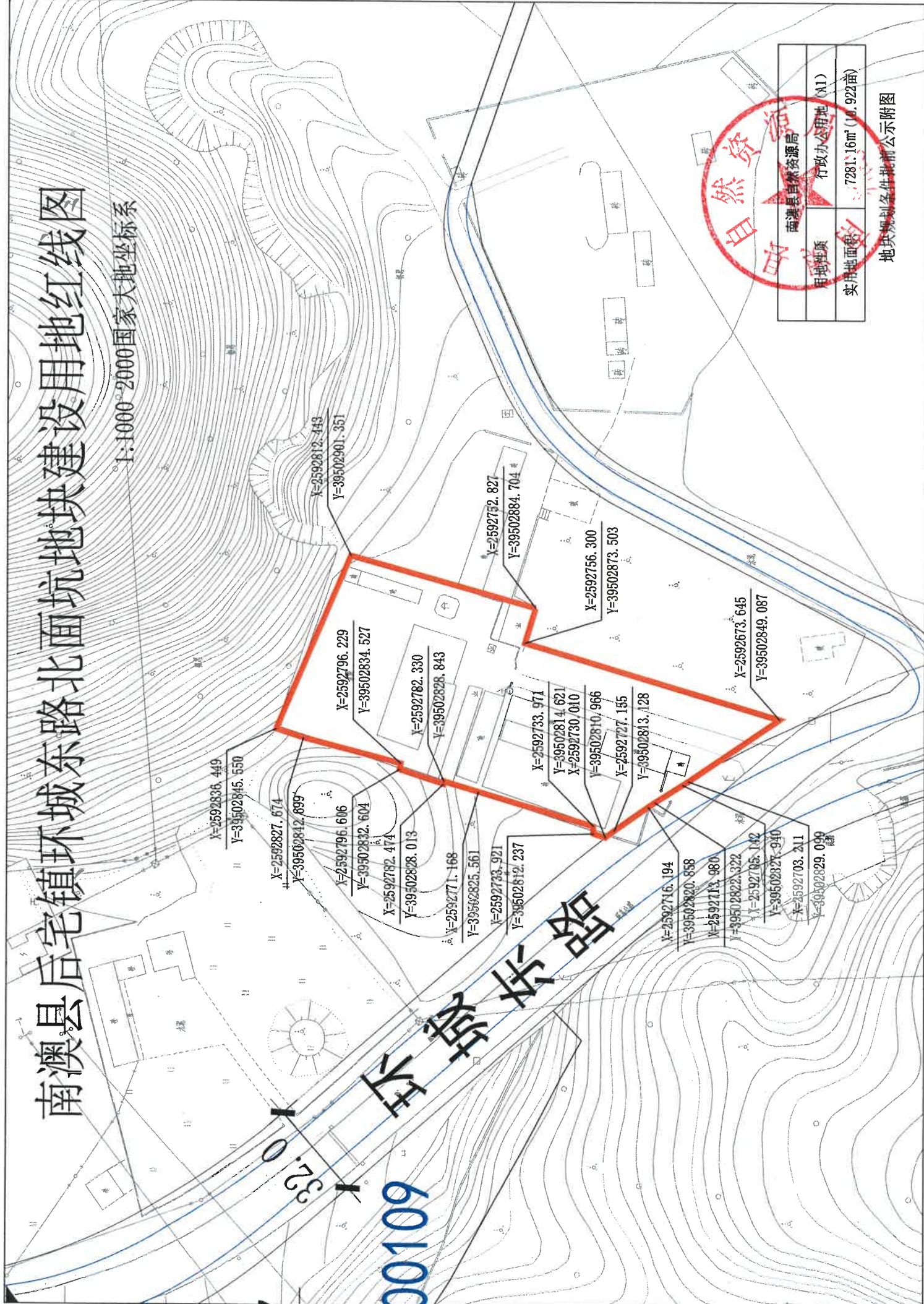


南澳县后宅镇环城东路北面坑地建设用地红线图

1:1000 2000国家大地坐标系



用地性质	行政办公用地 (A1)
实用地面积	7281.16m ² (10.922亩)

地灾规划条件批前公示附图

7
00109
环城东路

- X=2592836.449
Y=39502845.550
- X=2592827.674
Y=39502842.699
- X=2592796.229
Y=39502834.527
- X=2592782.330
Y=39502828.843
- X=2592752.827
Y=39502884.704
- X=2592733.971
Y=39502814.621
X=2592730.010
Y=39502810.966
X=2592727.155
Y=39502813.128
- X=2592716.194
Y=39502820.858
X=2592713.980
Y=39502822.322
X=2592705.142
Y=39502827.940
X=2592703.211
Y=39502829.090
- X=2592782.474
Y=39502832.604
- X=2592771.168
Y=39502825.561
- X=2592735.921
Y=39502812.237
- X=2592756.300
Y=39502873.503
- X=2592673.645
Y=39502849.087